

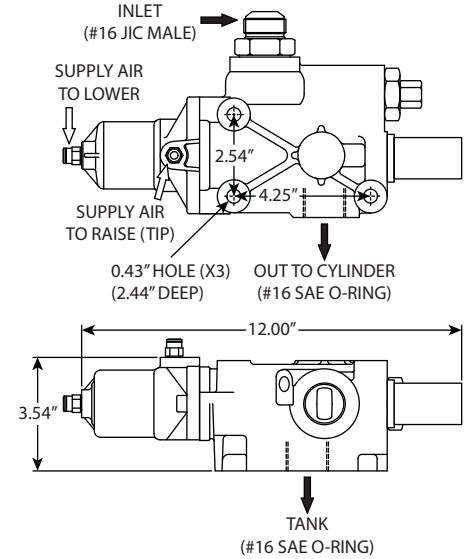
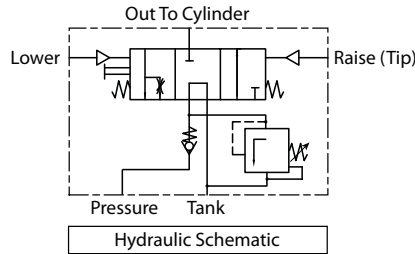
Tipper Valve (Single Pressure)

1270004

• Single Acting Hydraulic Tipper Valve • High flow capacity to meet the requirements of large dump trucks or end dump trailers • Regulates flow and limits pressure, providing reliable performance in heavy-duty environments • Integral air shifter for use with feathering or on/off style controls (available separately) • 3-Way single acting function three position functions - Pressure (Raise) / Hold / Return (Lower) • Relief valve pressure setting is 2000 PSI. To adjust relief valve, remove cap and turn adjustment screw a quarter turn for every 100 PSI. Clockwise to increase relief pressure and counterclockwise to decrease pressure. Reinstall relief valve cap with blue thread locking compound. • Mounting: Valve comes with 1/4" tube quick connect air fittings for the air actuator and an o-ring for use when the valve is direct mounted to the tank. This valve is typically mounted between the trucks frame rails to protect the valve from road debris. Mount valve to a flat surface to prevent spool binding.

Specifications

- 60 GPM Max Flow
- Relief Preset @ 2000 PSI
- 3500 PSI Max
- #16 JIC Male Inlet Port
- #16 SAE O-Ring Tank Port
- #16 SAE O-Ring Work Port
- 1/8" NPTF Air Ports
- Power Up/Gravity Down - Spring Center
- Cast Iron Construction
- Buna-N Seals
- Inlet Check Valve Integral
- Temperature Range: -15°F to 180°F
- Filtration: 25 Micron Or Better



Stock Number	Relief Valve Setting	Maximum Pressure	Maximum Flow Rate	Inlet Port	Outlet Port	Tank Port	Air Ports	Ship Wt.
1270004	2000 PSI	3500 PSI	60 GPM	#16 JIC Male	#16 SAE O-Ring	#16 SAE O-Ring	1/8" NPTF	16