

HP: 3–125

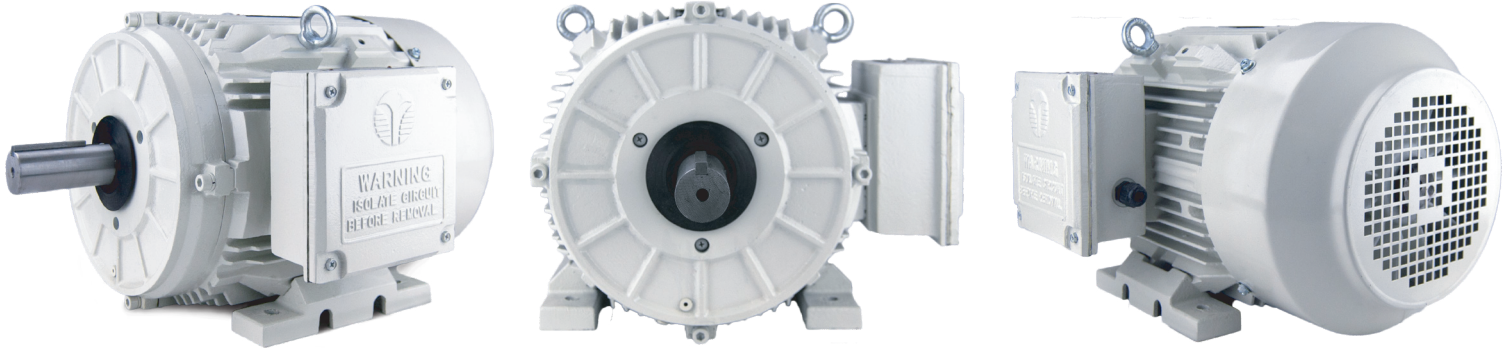
Frame: 213T–445T

RPM: 1200

Pole: 6

Volt: 230/460/796V

Body: T



STANDARD FEATURES



- 5% - 8% Slip NEMA Design "D" Operation
- Double Lip Oil Seals on Both Ends
- Cast Iron Terminal Box with Gasket
- Roller Bearing on 404T and Above
- TEFC Cast Iron Frame
- Corrosion Resistant Hardware
- Vacuum Impregnated Stator
- Mounting Position Convertible F1, F2, F3(thru 326T)
- Class F Insulation System , Class H Stator
- Tropicalization on Stator Winding
- One-Way Brass Condensation Drains
- 24 Month Warranty from Date of Purchase

HP	Sync Speed	Model Number
3	1200	BK3-CI-TF-213T-6-B-G-3
5	1200	BK3-CI-TF-215T-6-B-G-5
7.5	1200	BK3-CI-TF-254T-6-BR-G-7.5
10	1200	BK3-CI-TF-256T-6-BR-G-10
15	1200	BK3-CI-TF-284T-6-BR-G-15
20	1200	BK3-CI-TF-286T-6-BR-G-20
25	1200	BK3-CI-TF-324T-6-BR-G-25
30	1200	BK3-CI-TF-326T-6-BR-G-30
40	1200	BK3-CI-TF-364T-6-BR-G-40
50	1200	BK3-CI-TF-365T-6-BR-G-50
60	1200	BK3-CI-TF-404T-6-RR-G-60
75	1200	BK3-CI-TF-405T-6-RR-G-75
	1200	BK3-CI-TF-444T-6-RR-G-75
100	1200	BK3-CI-TF-444T-6-RR-G-100
125	1200	BK3-CI-TF-445T-6-RR-G-125