

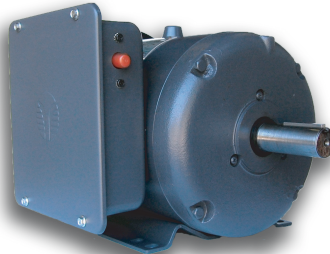
HP: 1/3–10
Pole: 4

Frame: 56–215T
Volt: 115/208–230 (<145T)
208–230 (>182T)

RPM: 1800 (60 Hz)
Body: T/TC/RND



56-145T



182T-215T



AUGER (56Y)

STANDARD FEATURES

- Manual Reset Protectors
- High Efficiency Dual Cap Design
- High Quality Molded Gaskets
- Over 300% Starting Torque

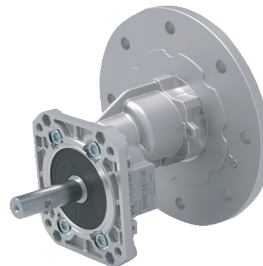
- Cast Iron End Bells
- Dual Oversized Ball Bearings
- Dependable Mechanical Starting Switch
- 18 Month Warranty



HP	Sync Speed	Model Number Rigid Base	Model Number C-Face with Base	Model Number C-Face with Round Body
1/3	1800	RD1-RS-TF-56-4-B-C-.33	RD1-RS-TF-56C-4-B-C-.33	RD1-RS-TF-56C-4-B-C-.33-RND
1/2	1800	RD1-RS-TF-56-4-B-C-.5	RD1-RS-TF-56C-4-B-C-.5	RD1-RS-TF-56C-4-B-C-.5-RND
3/4	1800	RD1-RS-TF-56-4-B-C-.75	RD1-RS-TF-56C-4-B-C-.75	RD1-RS-TF-56C-4-B-C-.75-RND
1	1800	RD1-RS-TF-56H-4-B-C-1	RD1-RS-TF-56HC-4-B-C-1	RD1-RS-TF-56HC-4-B-C-1-RND
	1800	RD1-RS-TF-143T-4-B-C-1	RD1-RS-TF-143TC-4-B-C-1	RD1-RS-TF-143TC-4-B-C-1-RND
1.5	1800	RD1-RS-TF-56H-4-B-C-1.5	RD1-RS-TF-56HC-4-B-C-1.5	RD1-RS-TF-56HC-4-B-C-1.5-RND
	1800	RD1-RS-TF-145T-4-B-C-1.5	RD1-RS-TF-145TC-4-B-C-1.5	RD1-RS-TF-145TC-4-B-C-1.5-RND
2	1800	RD1-RS-TF-56H-4-B-C-2	RD1-RS-TF-56HC-4-B-C-2	RD1-RS-TF-56HC-4-B-C-2-RND
	1800	RD1-RS-TF-145T-4-B-C-2	RD1-RS-TF-145TC-4-B-C-2	RD1-RS-TF-145TC-4-B-C-2-RND
3	1800	RD1-RS-TF-182T-4-B-B-3	RD1-RS-TF-182TC-4-B-B-3	RD1-RS-TF-182TC-4-B-B-3-RND
5	1800	RD1-RS-TF-184T-4-B-B-5	RD1-RS-TF-184TC-4-B-B-5	RD1-RS-TF-184TC-4-B-B-5-RND
7.5	1800	RD1-RS-TF-213TZ-4-B-B-7.5	RD1-RS-TF-213TCZ-4-B-B-7.5	RD1-RS-TF-213TCZ-4-B-B-7.5-RND
10	1800	RD1-RS-TF-215T-4-B-B-10	RD1-RS-TF-215TC-4-B-B-10	RD1-RS-TF-215TC-4-B-B-10-RND

AUGER MOTORS

HP	Sync RPM	Model Number
1/2	1800	RD1-RS-TF-56Y-4-B-C-.5
3/4	1800	RD1-RS-TF-56Y-4-B-C-.75
1	1800	RD1-RS-TF-56Y-4-B-C-1

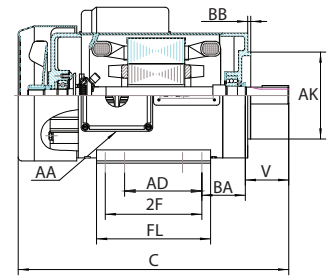
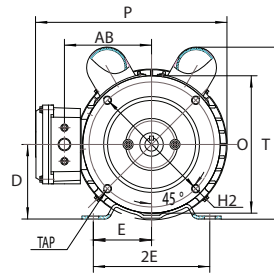
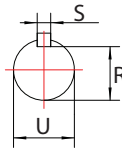
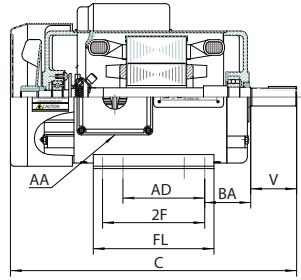
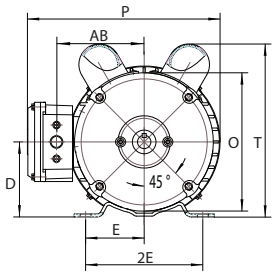


Contact Techttop to replace your unreliable inefficient auger gearboxes with high efficiency Helical units

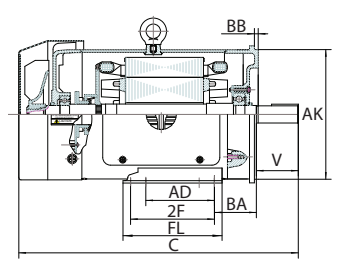
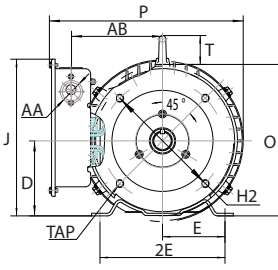
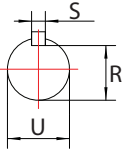
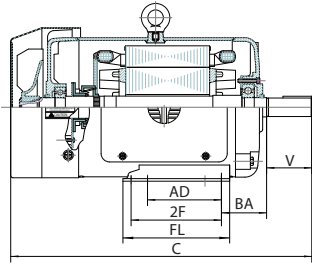
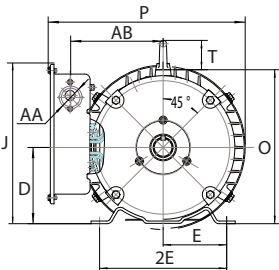
RIGID

SHAFT

C - FACE



FRAME	AA	AB	AD	AK	BA	BB	C	D	E	2E	FL	2F	O	P	R	S	T	U	V	TAP	H2
56 (1/3 HP)	0.88	3.7	2.65	---	2.25	---	10.7	3.5	2.44	4.88	4	3	5.67	8.3	0.517	0.188	7.7	0.625	1.88	---	---
56C (1/3 HP)				4.5		0.16														3/8-16	5.875
56				---		---														---	---
56C				4.5		0.16														3/8-16	5.875
143/145T	4.1	4	---	---	14.1	2.75	5.5	5.9	5	6.5	9.1	0.771	8.1	0.875	2.25	---	---				
143/145TC				4.5	0.16														3/8-16	5.875	



FRAME	AA	AB	AD	AK	BA	BB	C	D	E	2E	FL	2F	J	O	P	R	S	T	U	V	TAP	H2														
182T	1.13	5.5	4.5	---	2.75	---	16.95	4.5	3.75	7.5	6.5	5.5	9.45	9.1	11.65	0.986	0.25	1.75	1.125	2.75	---	---														
182TC				8.5		0.25															1/2-13	7.25														
184T				---		---															---	---														
184TC				8.5		0.25															1/2-13	7.25														
213TZ*				---		---															---	---														
213TCZ*				8.5		0.25															1/2-13	7.25														
215T				6.2		5.5															---	---	5.25	4.25	8.5	8.5	7	10.1	10.6	13.3	1.201	0.312	1.375	3.38	---	---
215TC				8.5		0.25															1/2-13	7.25														

* 213TZ MOTOR INCLUDES SHAFT ADAPTER TO 215T SHAFT SIZE

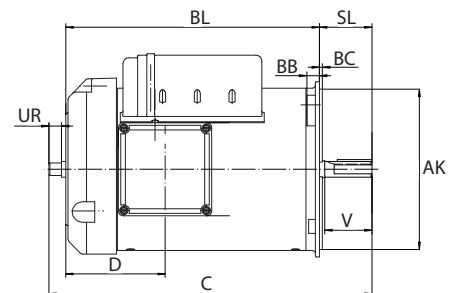
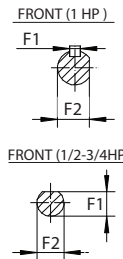
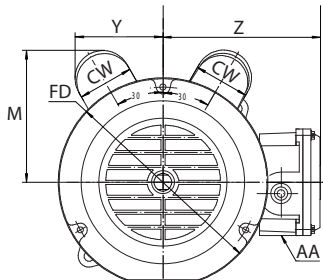
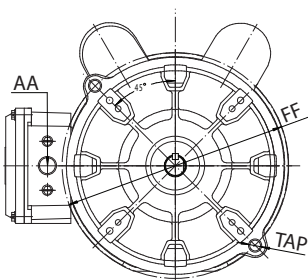
FRONT

REAR

SHAFT

SIDE

AUGER MOTORS



HP	AA	AK	BB	BC	BL	C	CW	D	FF	FD	F1	F2	M	SL	UR	V	Y	Z	TAP	PRICE	
0.5	0.875	6.375	0.52	0.12	8.51	11.2	1.93	3.95	7.25	7.3	0.45	0.5	5.3	2.02	0.5	1.875	3.1	5.53	0.36	\$348	
0.75					10.11	12.8					0.175	0.57	4.6							2.09	\$376
1.0					12.87																\$406