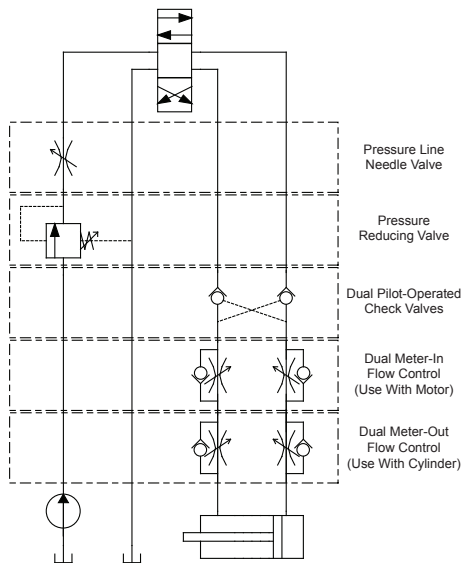




## Technical Information

• Sandwich valves allow additional valve functions to be added to a D05 circuit • Used in combination with D05 valves, this increased functionality is possible without more or larger manifolds and does not require external plumbing • This approach saves space, weight and reduces complexity • Use the sandwich stack bolts to add either one or two stacks to your circuit • There are many other sandwich D05 circuits available, please contact your sales representative for application assistance and valve functionality availability



Stock Number	Description	Ship Wt.
7040802	Pressure Line Needle Valve	7.0
7040804	Pressure Reducing Valve Adjustable 120-1000 PSI (12 GPM Max)	7.0
7040805	Pressure Reducing Valve Adjustable 500-3000 PSI (12 GPM Max)	7.0
7040812	Dual Pilot-Operated Check Valves	8.5
7040814	Dual Meter-In Flow Controls	8.5
8020742	Dual Meter-Out Flow Controls	8.5
4803100	Sandwich Valve Stack Bolt for One Stack (4 Required)	0.1
4803106	Sandwich Valve Stack Bolt for Two Stacks (4 Required)	0.1

