

JIC TYPE RESERVOIRS

OVERHEAD RESERVOIR BASE - BOTTOM SECTION

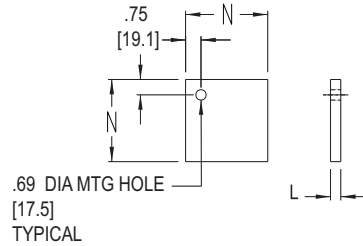
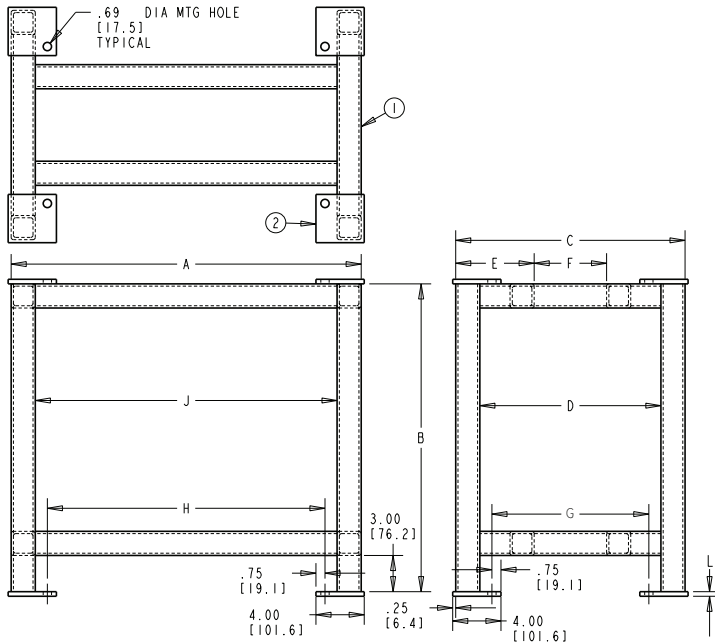
120 to 500 Gallon Reservoir Capacity

Containment trays are an optional accessory to JIC type reservoirs to contain minor leaks or weepage from system components during normal operation. Proper containment of these escaping fluids may help to limit contamination of the nearby environment and provide safer working conditions in areas otherwise negatively affected when exposed to the escaping fluid from the system. Reservoirs are sold separately.

Standard Features:

1. Square tube construction
2. (4) .38 or .50 inch thick (.69 inch dia clearance hole) mounting pads (shipped loose)
3. Mate with JIC type reservoirs ranging in size from 120 to 500 gallons
4. Base provides 3.38 inches of floor clearance
5. Prime painted LDI gray
6. Material:
 - Carbon steel construction

NOTE - See page 16 for reservoir containment stand assembly



FOOT MOUNTING PADS

N= 4 inches (10 to 210 GALLON)
N= 5 inches (250 GALLON AND UP)

NOTE: All dimensions are inches [mm]

Overhead Reservoir Base Dimensions (inches)														Reservoir Type			
Reservoir Size (gal)	Part No.	A	B	C	D	E	F	G	H	J	L	M	Style A	Style B	Style RB	Style RT	Piece Weight (lbs)
120	V-7211-B	59.00	36.00	31.00	27.00	11.00	9.00	25.00	53.00	55.00	.38	2.00 x .19	•				184
120	V-7223-B	59.00	30.75	31.00	27.00	11.00	9.00	25.00	53.00	55.00	.38	2.00 x .19		•	•		176
130	V-7211-B	59.00	36.00	31.00	27.00	11.00	9.00	25.00	53.00	55.00	.38	2.00 x .19				•	184
150	V-7211-B	59.00	36.00	31.00	27.00	11.00	9.00	25.00	53.00	55.00	.38	2.00 x .19	•				184
150	V-7223-B	59.00	30.75	31.00	27.00	11.00	9.00	25.00	53.00	55.00	.38	2.00 x .19		•	•		176
160	V-7211-B	59.00	36.00	31.00	27.00	11.00	9.00	25.00	53.00	55.00	.38	2.00 x .19				•	184
200	V-7213-B	71.00	36.00	37.00	33.00	14.00	9.00	31.00	65.00	67.00	.38	2.00 x .19	•				210
200	V-7225-B	71.00	30.75	37.00	33.00	14.00	9.00	31.00	65.00	67.00	.38	2.00 x .19		•	•		202
210	V-7213-B	71.00	36.00	37.00	33.00	14.00	9.00	31.00	65.00	67.00	.38	2.00 x .19				•	210
250	V-7384-B	71.00	30.75	37.00	31.00	14.00	9.00	29.00	63.00	65.00	.50	3.00 x .19		•			328
300	V-7214-B	71.00	40.00	37.00	31.00	14.00	9.00	29.00	63.00	65.00	.50	3.00 x .19	•				340
300	V-7226-B	81.00	30.75	49.00	43.00	20.00	9.00	41.00	73.00	75.00	.50	3.00 x .19		•	•		369
400	V-7215-B	71.00	40.00	49.00	43.00	20.00	9.00	41.00	63.00	65.00	.50	3.00 x .19	•				367
400	V-7227-B	95.00	30.75	73.00	67.00	32.00	9.00	65.00	87.00	89.00	.50	3.00 x .19		•			456
500	V-7215-B	71.00	40.00	49.00	43.00	20.00	9.00	41.00	63.00	65.00	.50	3.00 x .19	•				367

Note: For reservoir sizes not listed or custom sizes - consult factory

Dimensions and specifications are subject to change without notice. Not all items are Made-To-Stock, contact us for availability.

08/22

Ph : 920-682-6877
Fx : 920-684-7210



sales@ldi-industries.com
www.ldi-industries.com