

JIC TYPE RESERVOIRS

OVERHEAD RESERVOIR BASE - BOTTOM SECTION

10 to 100 Gallon Reservoir Capacity

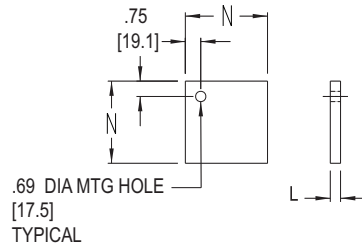
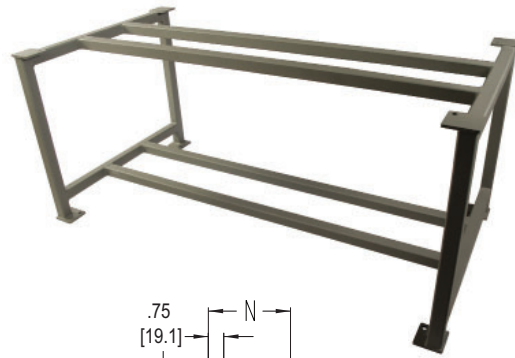
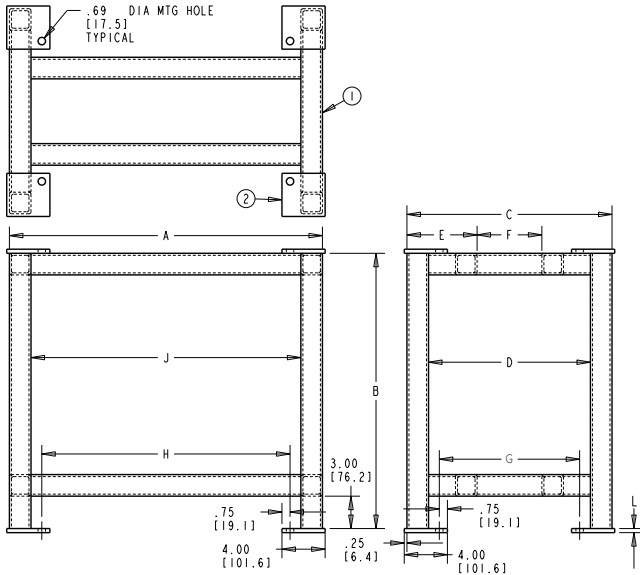
Containment trays are an optional accessory to JIC type reservoirs to contain minor leaks or weepage from system components during normal operation. Proper containment of these escaping fluids may help to limit contamination of the nearby environment and provide safer working conditions in areas otherwise negatively affected when exposed to the escaping fluid from the system. Reservoirs are sold separately.

Standard Features:

1. Square tube construction
2. (4) .38 inch thick (.69 inch dia clearance hole) mounting pads (shipped loose)
3. Mate with JIC type reservoirs ranging in size from 10 to 100 gallons
4. Base provides 3.38 inches of floor clearance
5. Prime painted LDI gray

6. Material:
 - Carbon steel construction

NOTE - See page 16 for reservoir containment stand assembly



FOOT MOUNTING PADS

- N= 4 inches (10 to 210 GALLON)
- N= 5 inches (250 GALLON AND UP)

NOTE: All dimensions are inches [mm]

Reservoir Size (gal)	Part No.	Overhead Reservoir Base Dimensions (inches)										Reservoir Type				Piece Weight (lbs)
		A	B	C	D	E	F	G	H	J	L	Style A	Style B	Style RB	Style RT	
10	V-7202-B	21.00	25.50	19.00	15.00	6.50	6.00	13.00	15.00	17.00	.38	•				97
10	V-7217-B	23.00	25.50	17.00	13.00	5.50	6.00	11.00	17.00	19.00	.38		•	•		97
10	V-7299-B	18.25	24.50	19.00	15.00	6.50	6.00	13.00	12.25	12.25	.38				•	97
15	V-7203-B	25.00	25.50	19.00	15.00	6.50	6.00	13.00	19.00	21.00	.38	•		•		103
20	V-7204-B	29.00	25.50	19.00	15.00	6.50	6.00	13.00	23.00	25.00	.38	•			•	109
20	V-7218-B	31.00	25.50	22.00	18.00	8.00	6.00	16.00	25.00	27.00	.38		•	•		115
30	V-7205-B	35.00	25.50	25.00	21.00	9.50	6.00	19.00	29.00	31.00	.38	•		•		126
35	V-7205-B	35.00	25.50	25.00	21.00	9.50	6.00	19.00	29.00	31.00	.38				•	126
40	V-7205-B	35.00	25.50	25.00	21.00	9.50	6.00	19.00	29.00	31.00	.38	•		•		126
50	V-7205-B	35.00	25.50	25.00	21.00	9.50	6.00	19.00	29.00	31.00	.38	•		•	•	126
60	V-7208-B	47.00	31.75	28.00	24.00	9.50	9.00	22.00	41.00	43.00	.38	•				156
60	V-7220-B	37.00	31.75	26.00	22.00	8.50	9.00	20.00	31.00	33.00	.38		•	•		139
70	V-7208-B	47.00	31.75	28.00	24.00	9.50	9.00	22.00	41.00	43.00	.38				•	156
80	V-7209-B	59.00	30.75	28.00	24.00	9.50	9.00	22.00	53.00	55.00	.38	•				172
80	V-7221-B	46.00	30.75	31.00	27.00	11.00	9.00	25.00	40.00	42.00	.38		•	•		157
90	V-7210-B	59.00	36.00	28.00	24.00	9.50	9.00	22.00	53.00	55.00	.38				•	180
100	V-7210-B	59.00	36.00	28.00	24.00	9.50	9.00	22.00	53.00	55.00	.38	•				180
100	V-7222-B	46.00	30.75	31.00	27.00	11.00	9.00	25.00	40.00	42.00	.38		•	•		157

Note: For reservoir sizes not listed or custom sizes - consult factory

Dimensions and specifications are subject to change without notice. Not all items are Made-To-Stock, contact us for availability.

03/19

Ph : 920-682-6877
Fx : 920-684-7210



sales@ldi-industries.com
www.ldi-industries.com