

CHAIN OILERS & APPLICATORS

NVB SERIES - FLAT STRIP BRUSH, STRAIGHT OR 45°

The NVB Series of brushes with metering valves are designed to apply lubricant to chain drives and they can be connected in series to lubricate several points and feed from a central reservoir.

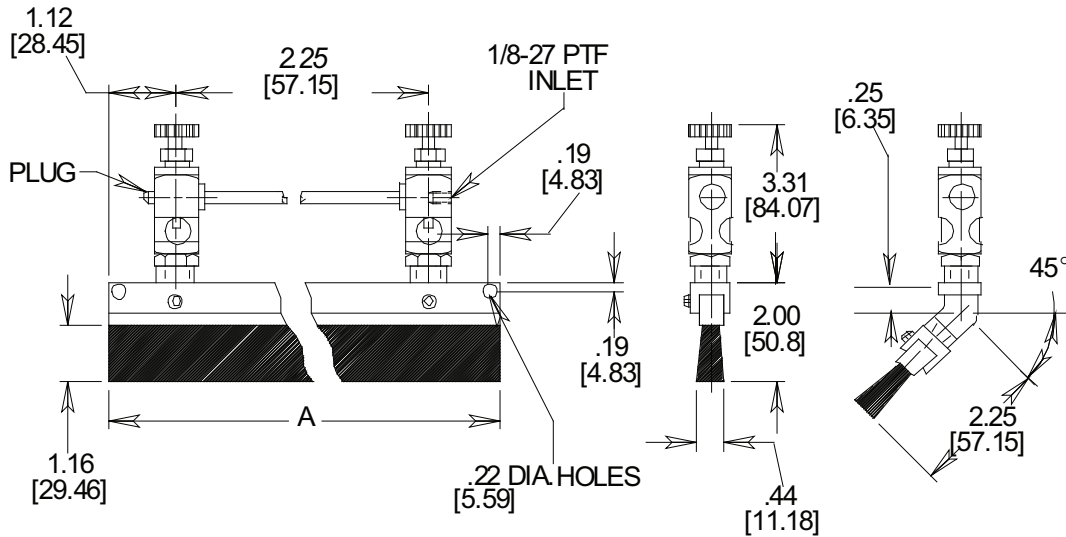
Provides precision control of lubricant to drive chains, strip stock, gears, conveyors, etc. Strip brushes are available in 2.25 inch (57.15mm) increments. Valves allow accurate feed control with drip rate readily visible through the sight window. Brush holder provides (2) .22 inch diameter (5.59mm) holes for easy mounting.

Standard Materials:

- Aluminum construction body
- Nylon brush
- Pipe threads are dryseal

Temperature Rating:

- Nylon maximum working temperatures up to 250°F (121°C)

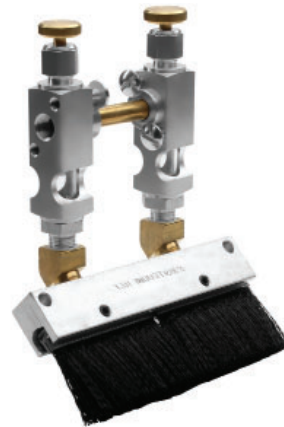


NOTE: All dimensions are inches [mm]

Straight



45°



Straight Strip Brush

Part no.	Brush Material	A inches (mm)	Feeds
NVB201-2	Nylon	2.25 (57.15)	1
NVB202-2	Nylon	4.50 (114.30)	2

45° Strip Brush

Part No.	Brush Material	A inches (mm)	Feeds
NVB251-2	Nylon	2.25 (57.15)	1
NVB252-2	Nylon	4.50 (114.30)	2

MODIFICATIONS AVAILABLE MADE TO ORDER - CONSULT OUR FACTORY (MINIMUM ORDER MAY BE REQUIRED)

Dimensions and specifications are subject to change without notice. Not all items are Made-To-Stock, contact us for availability.

02/14

Ph : 920-682-6877
Fx : 920-684-7210



sales@ldi-industries.com
www.ldi-industries.com