

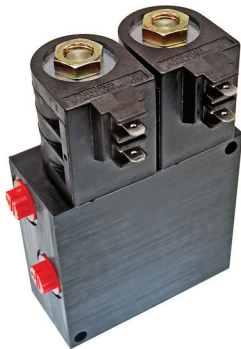
SOLENOID OPERATED DIRECTIONAL CONTROL VALVES

Closed & Open Center

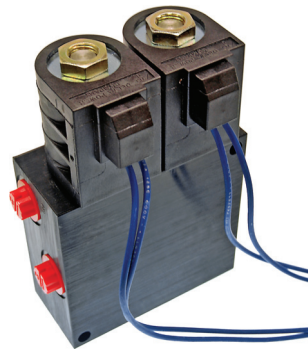


Technical Information

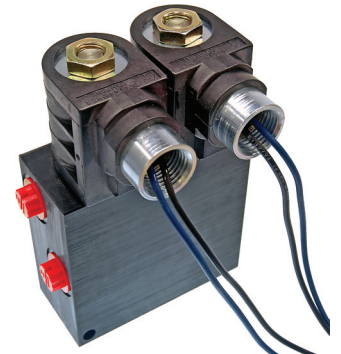
• Delta • 3000 Maximum PSI • 8 Maximum GPM* • Black Anodized Aluminum Body • #6 SAE Ports



Dual Spade Design



Dual Wire Leads Design



1/2" Conduit Wire Leads Design

Closed Center



Open Center



Stock Number	Electrical Termination	Inrush Amps	Holding Amps	Ship Wt.
9501630	12 VDC Dual Spades	-	1.80	5
9501632	24 VDC Dual Spades	-	0.90	5
9501631	12 VDC Dual Wire Leads	-	1.80	5
9501633	24 VDC Dual Wire Leads	-	0.90	5
9501634	125 VAC Conduit Wire Leads	-	0.17	5

Stock Number	Electrical Termination	Inrush Amps	Holding Amps	Ship Wt.
9501640	12 VDC Dual Spades	-	1.80	5
9501642	24 VDC Dual Spades	-	0.90	5
9501641	12 VDC Dual Wire Leads	-	1.80	5
9501643	24 VDC Dual Wire Leads	-	0.90	5
9501644	125 VAC Conduit Wire Leads	-	0.17	5

