



ReliefPLUS 40 GPM Relief / Gauge

Item# 9502863

Here is the answer to clean up complicated and unsightly hydraulic plumbing on your truck's hydraulic system. Simply plumb this 'pressure & tank' manifold assembly into your truck's pressure line from the pump and to the return line going to tank. This valve acts as a main system relief with the added benefit of a gauge to read system pressure. Reduce the headache of plumbing your truck today and utilize this professional hydraulic solution on your equipment. You'll be glad you did!

Benefits

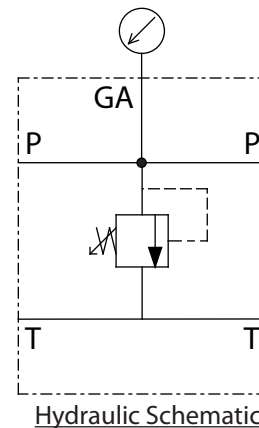
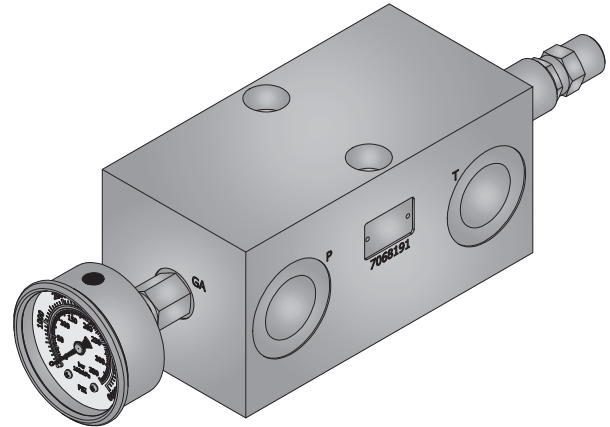
- Hydraulic couplers can be mounted directly to the manifold
- Removes leak points
- Centralizes system components
- Easily plumbed
- Professional and clean appearance

Features

- Operating Pressure: 3500 PSI Maximum
- Flow: 40 GPM
- Ports: #16 SAE O-ring P & T Ports, #6 SAE O-ring Gauge Port
- Pressure and Tank Port Spacing: Accommodates 1" Wing Couplers
- Relief Valve: Pilot Operated, Preset At 3000 PSI, 300-3500 Adjustment
- Pressure Gauge: Liquid Filled, 0-5000 PSI, Dual Scale Includes Bar
- Installation: Unrestricted
- Hardware Included: Socket Head Cap Screws, Washers, and Nuts
- Temperature Range: -40°F to +212°F
- Hydraulic System: All, Fixed and Variable Displacement Pumps
- Construction: Aircraft Grade 6061 Aluminum
- Shipping Weight: 12 lbs.

Typical Applications

- Primarily used on trucks to limit system working pressure
- Used on any system where a pressure limiting device is required



ReliefPLUS Truck Frame Mounting Kit

Item# 9502870

Mounting your ReliefPLUS a breeze when utilizing this mounting kit. This mounting kit is made for the ReliefPLUS.

Benefits

- No drilling holes into the frame
- Universal mounting kit fits most trucks
- Professional and clean appearance
- Can be removed and reassembled on another truck

Features

- Heavy Duty 1/4" Steel Construction
- Black Powder Coat Finish
- Includes All Necessary Hardware
- Angles Coupler Connections Upward
- Angles Pump and Tank Connections Downward
- Top Plate Protects Valves and Gauge

