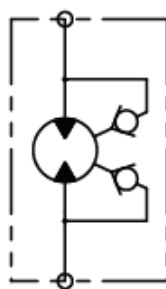
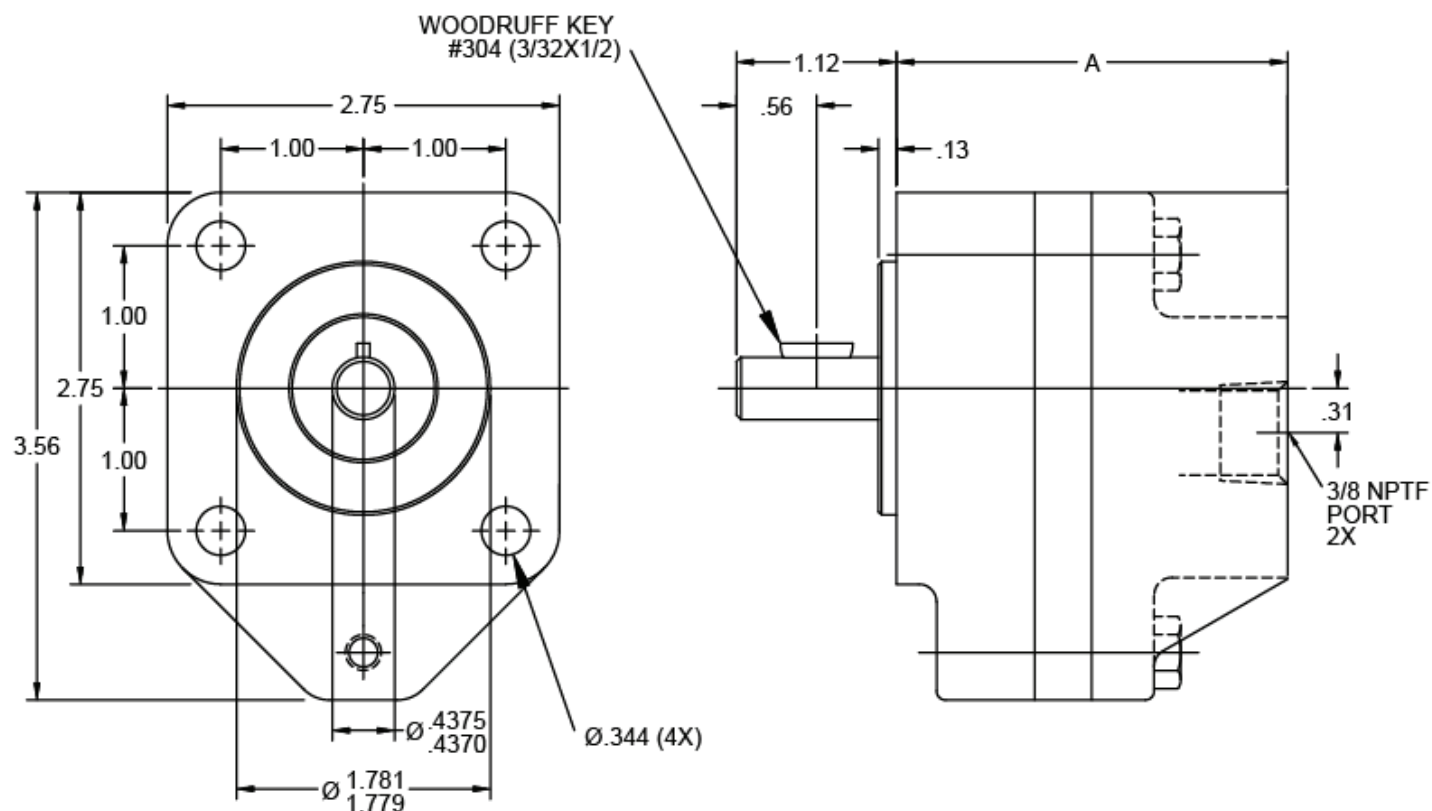
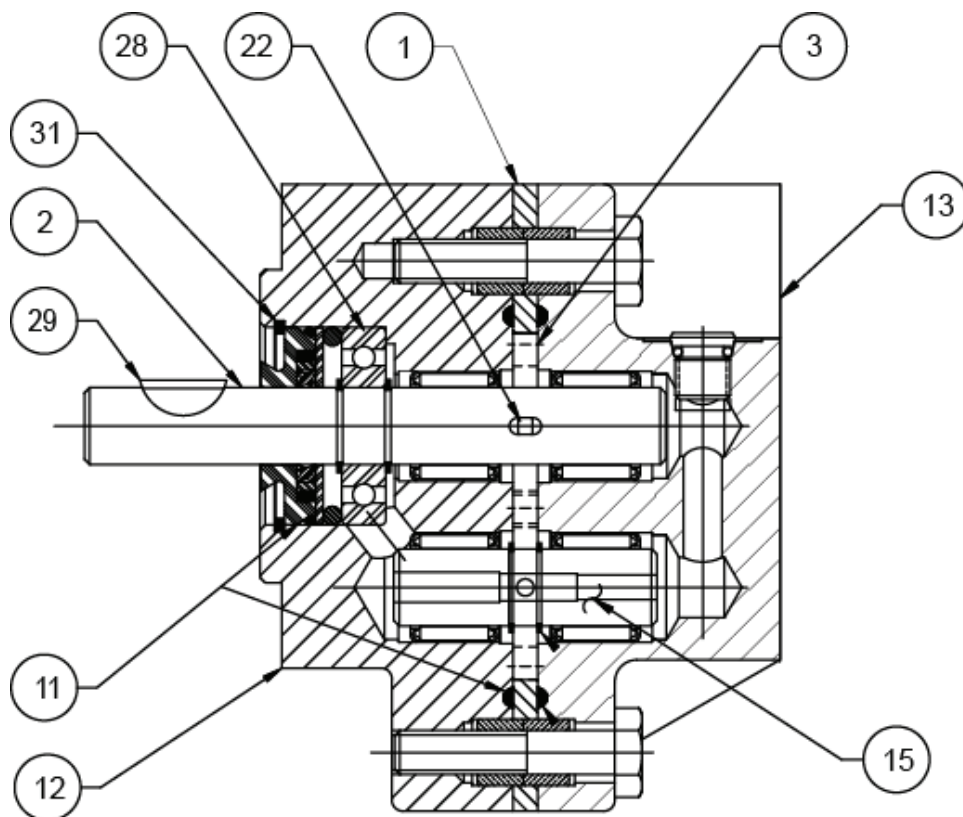



DM1-DM8 Hydraulic Motor, Bi-Directional


HYDRAULIC SCHEMATIC

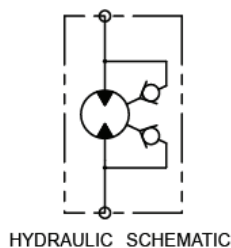
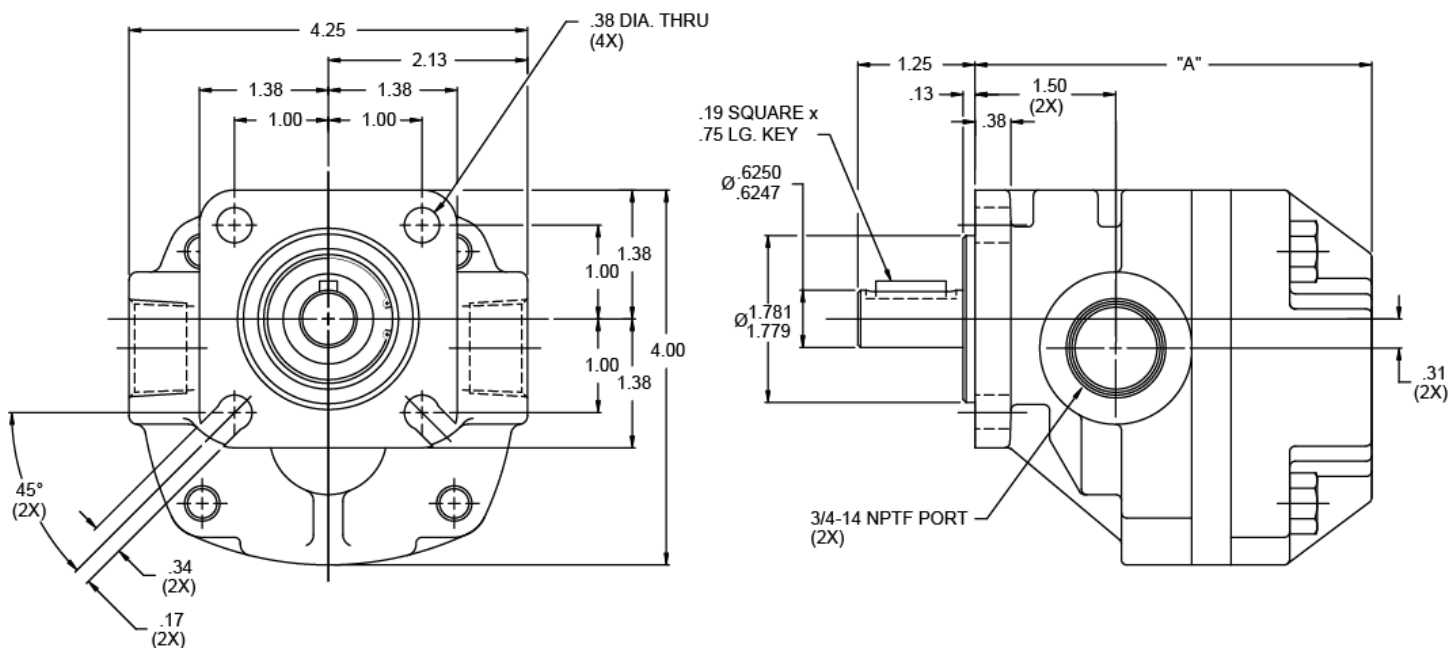
MODEL	0 PSI DISP. GAL./REV.	DISP. IN./REV.	CU. IN./REV.	SLIP GPM PER 100 PSI	THEORETICAL TORQUE IN.LBS./100 PSI	APPROX. TORQUE LOSS IN.LBS./1000 RPM	MAX. CONT PSI	MAX. SPEED RPM	A
DM1	0.00028	0.065	0.015	0.015	1.05	0.37	1500	4000	2.82
DM2	0.00047	0.108	0.017	0.017	1.75	0.61	1500	4000	2.91
DM4	0.00081	0.187	0.020	0.020	2.00	1.00	1500	4000	3.08
DM6	0.00137	0.316	0.025	0.025	5.10	1.80	950	3000	3.36
DM8	0.00202	0.468	0.030	0.030	7.50	2.60	650	3000	3.68

WARNING: The specifications/application data shown in our catalogs and data sheets are intended only as a general guide for the product described (herein). Any specific application should not be undertaken without independent study, evaluation, and testing for suitability.


DM1-DM8 Hydraulic Motor, Bi-Directional

SECTION A-A

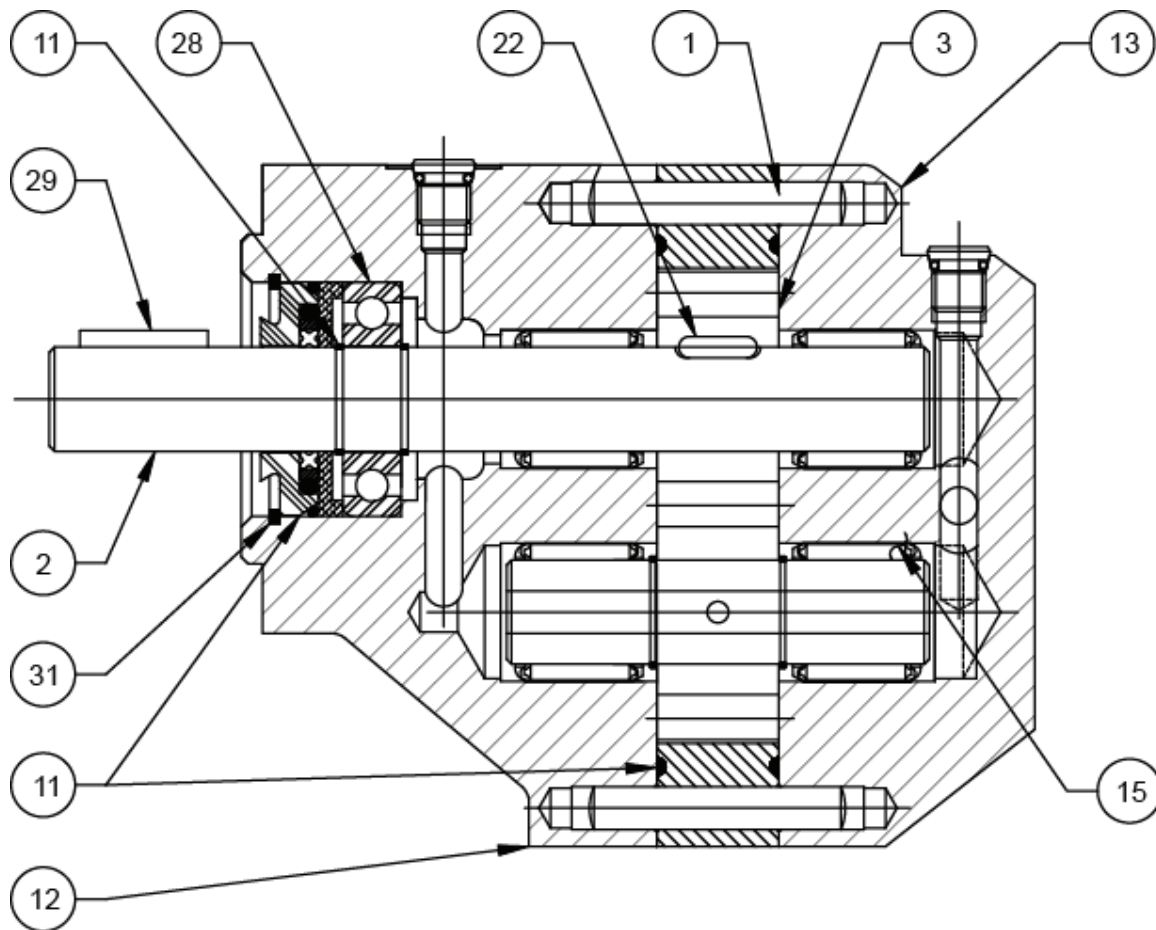
ITEM #	DESCRIPTION	QTY.
1	GEAR CASE	1
2	DRIVE SHAFT	1
3	GEAR	1
11	SEAL KIT	1
12	DRIVE PLATE ASS'Y	1
13	END PLATE ASS'Y	1
15	IDLER SHAFT ASS'Y	1
22	GEAR PIN	1
28	OUTBOARD BEARING	1
29	DRIVE KEY	1
31	SNAP RING	1

WARNING: The specifications/application data shown in our catalogs and data sheets are intended only as a general guide for the product described (herein). Any specific application should not be undertaken without independent study, evaluation, and testing for suitability.


DM21-DM27 Hydraulic Motor, Bi-Directional


MODEL	0 PSI DISP. GAL./REV.	DISP. CU. IN./REV.	SLIP GPM/100 PSI	THEORETICAL TORQUE IN.LBS./100 PSI	APPROX. TORQUE LOSS IN.LBS./1000 RPM	MAX. CONT. PSI	MAX. SPEED RPM	A
DM21	0.00178	0.411	0.060	6.5	2.3	1500	3000	4.25
DM23	0.00304	0.702	0.068	11.1	3.9	1200	3000	4.53
DM25	0.00425	0.981	0.083	15.6	5.5	850	2500	4.81
DM27	0.00633	1.460	0.113	23.2	8.1	550	2000	5.31

WARNING: The specifications/application data shown in our catalogs and data sheets are intended only as a general guide for the product described (herein). Any specific application should not be undertaken without independent study, evaluation, and testing for suitability.


DM21-DM27 Hydraulic Motor, Bi-Directional

SECTION A-A

ITEM #	DESCRIPTION	QTY.
1	GEAR CASE	1
2	DRIVE SHAFT	1
3	GEAR	1
11	SEAL KIT	1
12	DRIVE PLATE ASS'Y	1
13	END PLATE ASS'Y	1
15	IDLER SHAFT ASS'Y	1
22	GEAR PIN	1
24	RETAINING RING	2
28	OUTBOARD BEARING	1
29	DRIVE KEY	1
31	SNAP RING	1

WARNING: The specifications/application data shown in our catalogs and data sheets are intended only as a general guide for the product described (herein). Any specific application should not be undertaken without independent study, evaluation, and testing for suitability.