

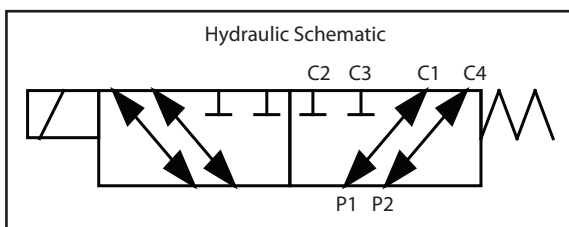
9502442 Information



- All Ports Are #8 (3/4-16) SAE O-Ring
- "In" ports are P1 and P2
- Oil passes to C1 and C4 when coil is de-energized
- Oil passes to C2 and C3 when coil is energized.

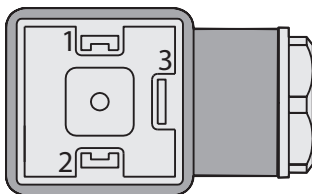
This valve is designed to allow the user to choose between two different circuits. One double acting valve may be used to control two different double acting cylinders or motors. Ports C1 and C4 are used to control circuit 1, and ports C2 and C3 are used to control circuit 2. The switch is used to select which circuit is selected. In the de-energized state, circuit 1 is selected. When the solenoid is energized, circuit 2 is selected.

Connect ports P1 and P2 to the remote outlets on your skidsteer/tractor or to the work ports of a double acting valve, whichever applies.



DIN Connector Wiring

- 1 - Connect to switch lead
- 2 - Connect to ground
- 3 - Not used



For use with 12 volt negative ground electrical systems.
Connection to any other system
will result in immediate and severe
damage.

